

# 6-XFMJ Series

## Front-terminal Gel Battery



### Main Applications

- ▶ Floating applications for telecom sites
- ▶ Solar & wind energy storage system
- ▶ Off-grid & bad-grid hybrid sites
- ▶ UPS and emergency illumination

### Benefits

- ▶ Long life design for float application, 15 years
- ▶ Excellent charge acceptability and deep cycling performance
- ▶ Suitable for 19 inch/23 inch cabinet, reduce the occupied area
- ▶ High performance/price ratio and low annual operating cost

### Technical Features

- ▶ Special polymer gel electrolyte without flowing to avoid acid stratification and can prolong service life
- ▶ Front terminal connection for fast and easy installation and maintenance
- ▶ Excellent discharging ability in low current
- ▶ High stability and security, millions of batteries are in service



The 6-XFMJ series front-terminal gel battery is the product developed by SHOTO through the international advanced gel technology with outstanding performance and has been widely used in the world.

With special grid design, corrosion-resistant alloy materials, superior quality gel electrolyte, proprietary activator and advanced sealing technology, 6-XFMJ series battery devotes itself to provide more stable and reliable backup power for communication and energy storage systems.

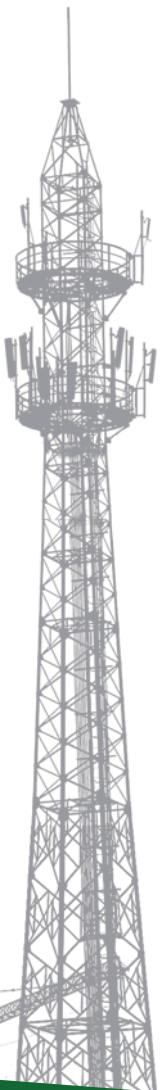
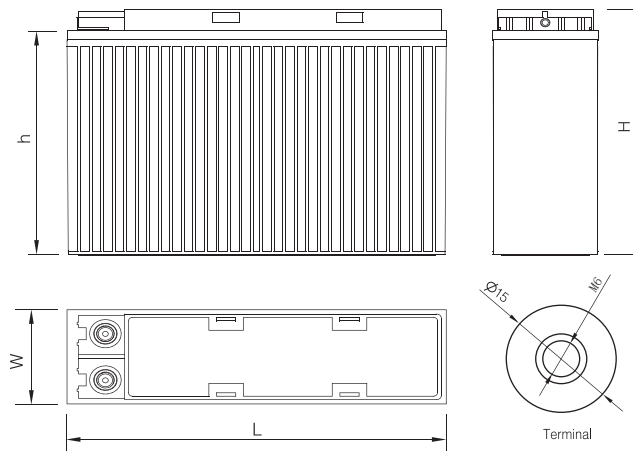
*Passion for Storage  
and Green Energy*

# 6-XFMJ Series

## Front-terminal Gel Battery



### Drawings



### Specification



	6-XFMJ-90	6-XFMJ-100	6-XFMJ-125	6-XFMJ-135	6-XFMJ-150
Nominal Voltage(V)	12	12	12	12	12
Length(mm)	395	520	550	550	550
Width(mm)	110	110	110	110	125
Height(mm)	286	254	286	310	310
Total Height(mm)	286	254	286	310	310
10hr Capacity(Ah,25°C)	90	100	125	135	150
Terminal	M6	M6	M6	M6	M6
Terminal Torque(Nm)	9~11	9~11	9~11	9~11	9~11
Internal Resistance (mΩ)	5.0	4.75	5.0	4.85	4.7
Short Circuit Current(A)	2400	2526	2400	2474	2553
Weight(kg)	33.5	37.5	45.8	47.5	56.0