

6-FMXH Series

Front Terminal
High Temperature Battery



Main Applications

- ▶ High temperature environment (35°C)
- ▶ Outdoor base station
- ▶ Floating operation site
- ▶ UPS

Benefits

- ▶ Reduce operational cost (less cooling consumption)
- ▶ Reduce CO₂ emission
- ▶ Secure operation under high temperature up to 55°C
- ▶ Double floating charge life vs. traditional VRLA battery under 35°C

Technical Features

- ▶ Best performance for continuous operation up to 35°C
- ▶ Extend service life under high temperature
- ▶ Excellent over discharge recovery capability



SHOTO 6-FMXH series is a new product in the SHOTO battery family. This product has been designed for high temperature application, based on international advanced technology. With corrosion-resistant alloy material, special grid design, proprietary activator, low density electrolyte technology. 6-FMXH battery devote itself to protect our Environment and Human with green clean energy and natural resources used effective.

*Passion for Storage
and Green Energy*

6-FMXH Series

Front Terminal
High Temperature Battery

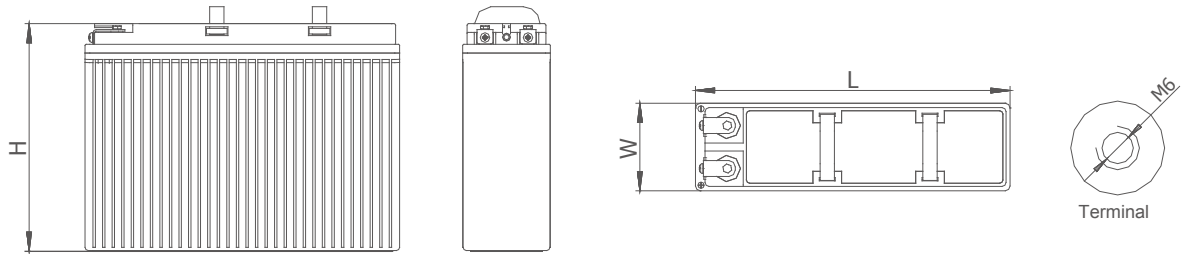


SHUANGDENG GROUP

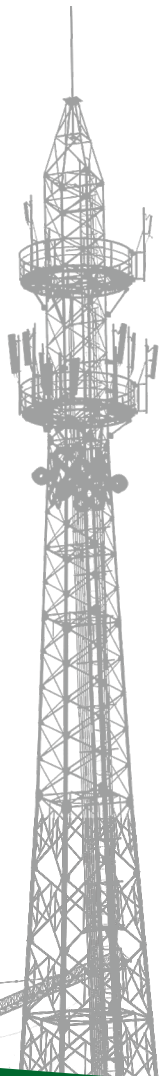
shoto



Drawings



Specification



	6-FMXH-100B	6-FMXH-150B	6-FMXH-170
Nominal Voltage(V)	12	12	12
Length(mm)	395	549	559
Width(mm)	110	110	125
Height of Monobloc(mm)	286	310	315
Total Height(mm)	286	310	315
10hr Capacity(Ah,25°C)	100	150	170
10hr Capacity(Ah,35°C)	103	155	175
Terminal	M6	M6	M6
Terminal Torque(Nm)	9~11	9~11	9~11
Internal Resistance (mΩ)	4.3	3.7	3.2
Short Circuit Current(A)	2122	2466	2852
Weight(kg)	31.5	49	57.5