

6-FMX Series

Front Terminal Battery



shoto®

Main Applications

- ▶ Telecom site
- ▶ Outdoor base station
- ▶ Floating operation site
- ▶ UPS

Benefits

- ▶ Front terminal design, easy access for faster installation and maintenance
- ▶ Optimal energy density, save floor space
- ▶ No leakage and no acid smog spray during the operation

Technical Features

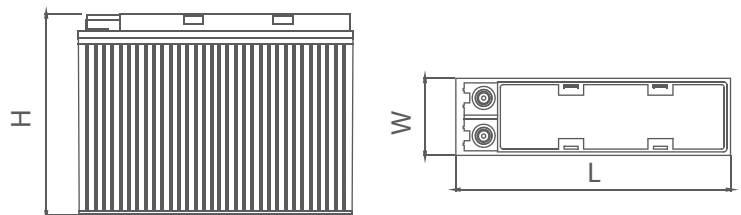
- ▶ Excellent capacity retention rate
- ▶ Long life float service design
- ▶ Excellent over discharge recovery capability

*Passion for Storage
and Green Energy*



6-FMX series product is a high-capacity battery of new model. With easy usage and maintenance, it is intended for service in telecom system, UPS, and security system and so on. The designed float charge life of the battery is 12 years.

Drawings



6-FMX Series

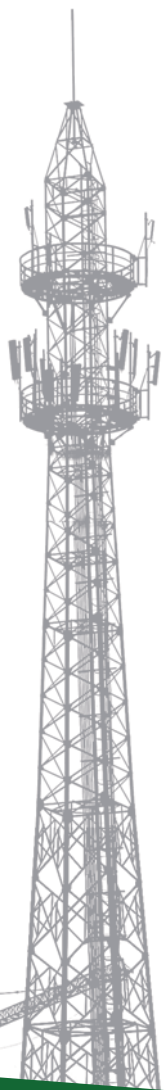
Front Terminal Battery



Specification



	6-FMX-50	6-FMX-80	6-FMX-100B	6-FMX-150B	6-FMX-150C
Nominal Voltage(V)	12	12	12	12	12
Length(mm)	390	395	395	549	549
Width(mm)	105	105	110	110	125
Height of Monobloc(mm)	200	270	286	310	310
Total Height(mm)	200	270	286	310	310
10hr Capacity(Ah , 25°C)	50	80	100	150	150
Terminal	M6	M6	M6	M6	M6
Terminal Torque(Nm)	9~11	9~11	9~11	9~11	9~11
Internal Resistance (mΩ)	6.4	5.2	5.2	4.2	3.5
Short Circuit Current(A)	1426	1755	1755	2173	2607
Weight(kg)	17.8	27	30.8	46	52



	6-FMX-150D	6-FMX-170	6-FMX-180	6-FMX-190	6-FMX-200
Nominal Voltage(V)	12	12	12	12	12
Length(mm)	549	559	559	559	559
Width(mm)	110	125	125	125	125
Height of Monobloc(mm)	288	315	315	315	315
Total Height(mm)	288	315	315	315	315
10hr Capacity(Ah , 25°C)	150	170	180	190	200
Terminal	M6	M6	M6	M6	M6
Terminal Torque(Nm)	9~11	9~11	9~11	9~11	9~11
Internal Resistance (mΩ)	4.0	3.5	3.5	3.2	3.2
Short Circuit Current(A)	2282	2607	2607	2852	2852
Weight(kg)	44	54	54	56.5	56.5